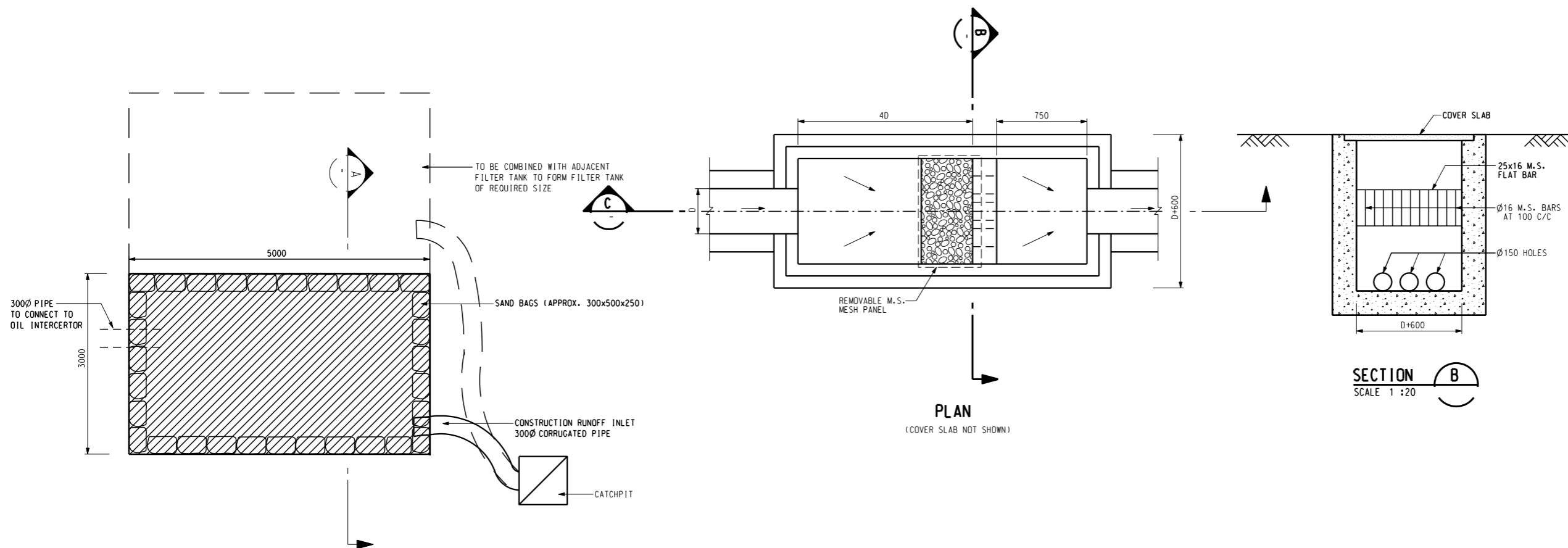


NOTES

1. FOR NOTES REFER TO DRAWING NO. 203358/U/2330 .

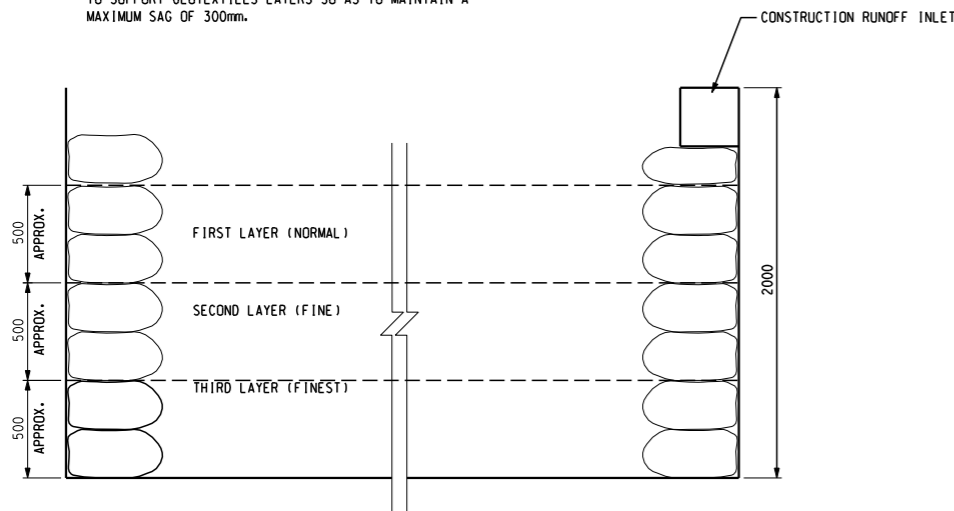


DETAILS OF FILTER TANK

SCALE 1:40

NOTE:

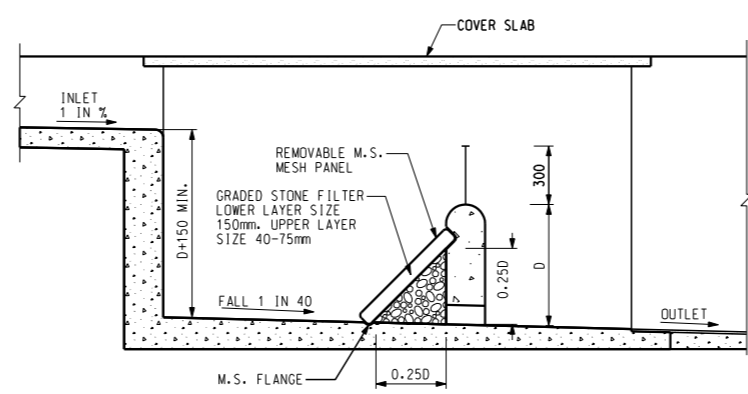
1. SAND BAGS SHALL BE PROVIDED WHEREVER APPROPRIATE TO SUPPORT GEOTEXTILES LAYERS SO AS TO MAINTAIN A MAXIMUM SAG OF 300mm.



SECTION A SCALE 1:20

NOTE:

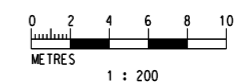
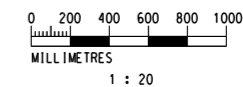
- THE LABEL ON THE GEOTEXTILE LAYERS REFER TO THE PORE SIZES OF THE RESPECTIVE LAYERS WHERE THE ACTUAL PORE SIZES SHALL BE DETERMINED ACCORDING TO THE SAND PARTICLES SIZE.
- THE PORE SIZES OF THE RESPECTIVE LAYERS SHALL BE AS FOLLOWS:  
 NORMAL:  $D_{90} \leq D_{50}$  SOIL  
 FINE:  $D_{90} \leq D_{10}$  SOIL  
 FINEST:  $D_{90} \leq D_{0.075}$  SOIL  
 WHERE  
 $D_{90}$  = THE PORE SIZE BELOW WHICH LIES 90% OF THE PORE SIZES IN GEOTEXTILE.  
 $D_{0.075}$  = THE PARTICLE SIZES BELOW WHICH LIES 85% BY WEIGHT OF THE SOIL TO BE FILTERED (ONLY FRACTION SMALLER THAN 5mm TO BE CONSIDERED)



SECTION C SCALE N.T.S. SAND TRAP DETAILS

NOTE:

- ALL DIMENSIONS ARE IN MILLIMETRES.
- GRADED STONE FILTER SHALL BE CRUSHER RUN GRANITE AGGREGATE.
- ALL MILD STEEL STRUCTURES TO BE HOT DIP GALVANIZED.



A	JUN 04	KL	ISSUED FOR CONSTRUCTION, IDENTICAL TO TENDER DRAWING REVISION 01		
Rev.	Date	Drn.	Description	Dgn.	Chd. App'd.
Designed:	BH/24/03	Date:	JUL 2003	Checked:	TT/24/03
Drawn:	KL	Date:	JUL 2003	Checked:	BH/24/03
Approved:	KWL/24/03	For MCL	Date of Issue:	OCT 2003	

Client  
 The Government of the Hong Kong Special Administrative Region  
 Highways Department

Consulting Engineers  
**Mott Connell Ltd.**  
 in Association with  
 Halcrow China Ltd MVA Hong Kong Ltd Urbis Ltd  
 Milich & Co Archaeological Assessments HDS Preston Ltd

Project  
 Improvement to Tung Chung Road between Lung Tseng Tau and Cheung Sha

Title  
 DETAILS OF FILTER TANKS AND SAND TRAPS FOR TEMPORARY DRAINAGE SYSTEM

Scale: AS SHOWN

Contract No. / Unit HY/2003/19  
 Drawing No. Rev.

© Copyright Reserved 203358/U/2391 A

CAD File: r:\203358\vol08\U2391A.DGN Status: CONST.